

## 2010 Senior LaMancha Does

1. SGCH Barnowl Spellbound \*M American orange DOB: 04/2000



S: \*B Windstar Gotta Clue  
 SS: ++\*B Jibarski Couriers Exclusive  
 SD: SGCH Windstar Notta Shy Anne 2\*M  
**D: Tempo Mariah's Sabrina**  
 DS: \*B Rockin-CB E Ensign  
**DD: Tempo Mariah's Selena**

LA 3-1 FS90 VEEE

As a first generation LaMancha, "Spell" is a primary foundation doe of the herd, and it is

her long, tall, strong, and dairy style that we continue to strive for in her numerous descendants. At nearly 10 years old, she is fairing quite well and may be bred this fall.

2. SGCH Barnowl Bewitched \*M American cream DOB: 05/2001



S: +\*B Miscellaneous Sid's Caesar  
 SS: ++\*B Lucky Star's B Desperado  
 SD: GCH Miscellaneous Sid's Sidney 3\*M  
**D: Tempo Mariah's Sabrina**  
 DS: \*B Rockin-CB E Ensign  
**DD: Tempo Mariah's Selena**

LA 5-1 FS90 VEEE, 8-2 FS92 EEEE

2007 California State Fair Champion & Reserve Best Udder  
 2<sup>nd</sup> place at ADGA Nationals 2005, 2006, 2007 as 4, 5, 6 yr old  
 3<sup>rd</sup> place age doe at ADGA Nationals 2009  
 1<sup>st</sup> place age doe W WA State Fair

"BWitch" is certainly our herd matriarch and the incredible doe who put the Barnowl herd on the proverbial map. She excels across the board as an extremely large-frame doe with a capacious, well-structured mammary system, superb body capacity, and simply exudes dairy character. Her progeny have demonstrated consistent strength in dairy character and capacity and correctness of mammary system, such as seen in Buffy and Hokus. Much can be said about BWitch, but we believe she has spoken quite well for herself.



3. Barnowl Amaltheia \*M American black/white DOB: 04/2001



S: +\*B Miscellaneous Sid's Caesar  
 D: Barnowl Queen Arachne  
 DS: \*B Tempo Kulik  
**DD: Tempo Mariah's Selena**

LA 4-2 FS87 +EEV

"Theia" excels in strength of bone, dairy character, and length and levelness of topline; however, due to a bout of mastitis, she has primarily been a brood doe in recent years. We

are quite excited about her two daughters we have retained: Adraesta and a 2010 doeling sired by Tach Lach. Theia is the twin sister to Barnowl Aphrodite, dam of Desi, Fish, and dry yearling Avalon.

4. SGCH Barnowl Quidditch "Q" American cream DOB: 04/2003



S: GCH +\*B Tempo Yagudin  
 SS: GCH ++\*B OneOakHill Med. Tumult  
 SD: GCH Tempo Katya 6\*M  
 D: SGCH Barnowl Spellbound \*M  
 DS: \*B Windstar Gotta Clue  
**DD: Tempo Mariah's Sabrina**

LA 4-2 FS92 EEEE, 6-4 FS92 EEEE  
 Top ten at ADGA Nationals 2005-2009  
 Best of Breed W WA State Fair 2008  
 1st place age doe, OR State Fair 2010

When "Q" was just a pretty milking yearling, Laurie adopted her as "her perfect goat." Although she may not be "perfect," Q has proven to be quite an incredible doe, and has so dramatically influenced our herd that she is the founding doe of our "q-line." Dairy with great strength of bone, Q excels in sharpness, front end assembly, feet and legs, and a very well attached and pleasing mammary system. Her progeny has been particularly consistent with their lovely general appearance and strength of bone. Q had triplet does this year and we are very excited about the doe we retained named Quatchi Q, who will likely be bred to be a milking yearling.

5. SGCH Tempo Elena 7\*M Purebred white w/ waddles DOB: 04/2003



S: +B SG Hogg's-Hideaway Chalupa  
 SS: OneOakHill Tumbleweed Taipei  
**SD: SGCH Hogg's Hideaway Chimera \*M**  
 1994 & 1996 ADGA National Champion  
 D: SGCH Tempo Katya 6\*M  
**DS: +\*B GCH Winterwood's Maestro**  
**DD: GCH Aspen-Hill's Karoline 5\*M**

LA 4-3 FS90 EEEV, 5-5 FS90 EEEV, 6-5 FS90 VEEV  
**Mariah's Showmanship Doe,**  
 ADGA Natl Sr CH Showman 2005  
 Top ten at ADGA Nationals 2005-2007  
 Reserve Champion W WA State Fair 2007

According to our relief-milker Ruthie, Elena is a "stud-muffin." Easily our tallest, longest, and most elegant doe, Elena exemplifies dairy character, sharpness, and levelness. Likewise, Elena's progeny have been consistent with continuing this superb dairy character. However, we have only her 2009 doeling Midori in our ownership, as Elena has proven to be our most popular doe with other breeders and her many daughters and sons have flourished in herds throughout the country. Elena was also Mariah's showmanship doe, following after her sister Surya and dam Katya—a family of does that helped Mariah to win four National Champion Showmanship titles (1998, 2002, 2003, & 2005). Making this a line that is practically legendary for their superb personality.



6. SGCH Barnowl Buffy American frosted black/choc. DOB: 04/2004



**S: ++\*B Quixote Jo's Monet**  
 SS: ++B Tan-Oak Novason's Landmark  
 SD: GCH Quixote Joelle \*M  
 D: SGCH Barnowl Bewitched

LA 3-2 FS90 EEEE, 5-4 FS90 VEEE

Buffy is very much like her dam BWitch with a large, dairy frame, a very correct mammary system, and even better feet and legs, although she has failed to develop the incredible depth of body capacity of her dam. Her daughters have consistently demonstrated beautiful mammary systems with high, wide rear udders and smooth fore udders—including Baudelaire, owned by Purple Thistle Farm, on the left in the 2009 dam and daughter picture above.

7. SGCH Barnowl Deesse de l'Amour Amer. black/white DOB: 02/2004



**S: +\*B GCH Tempo Yagudin**  
 D: Barnowl Aphrodite

LA 3-5 FS90 EEEV, 5-5 FS91 EEEE  
 1<sup>st</sup> Sr Yearling at ADGA Nationals 2005  
 Grand Champion, Clark Co Fair 2010  
 Grand Champion, OR State Fair 2010  
 1st place age doe, W WA State Fair 2010

“Desi” is one of our favorite does, but she has also proven to be our “problem child” as one ailment or accident after another has kept her out of the show ring. This year though she was back and ready for action! She quickly finished her championship, showing well throughout the season alongside her younger sister Fish. She excels in general appearance, a large-framed doe who is long and level over the topline and rump, coupled with superb dairy character and a correct overall mammary system.

8. SG Barnowl Curlie Q American choc./silver sundgau DOB: 07/2004



**S: +\*B Miscellaneous Sid's Caesar**  
 D: SGCH Barnowl Quidditch

LA 3-1 FS90 EEEE, 5-1 FS91 EEEE  
 ADGA Junior National Champion 2005  
 1<sup>st</sup> Jr Yearling at ADGA Nationals 2005  
 10<sup>th</sup> place 5&6 yr old ADGA Natls 2009  
 1<sup>st</sup> place age doe, Dist VII Specialty 2010

Curlie is truly a lovely and graceful doe, her exquisitely sharp, upstanding, long, level, deep, balanced, and dairy general appearance is what we strive for in our breeding program. While not the fanciest udder in the herd, Curlie has a strong mammary system with good width of rear udder and smoothness of fore. After years of hand milking, we can also say she is by far the easiest doe in the herd to milk. Her progeny have continued this well-balanced style, demonstrating length and levelness, dairy character, and lovely up-standing carriage—see Qiviut Q and Boucle Q.

9. SGCH Barnowl Hockus Pockus American white DOB: 04/2006



**S: +\*B SG Kastdemur's Tach Lach**  
**SS: Kastdemur's Sting**  
**SD: SGCH Kastdemur's Evian 2\*M**  
 2008 & 2009 ADGA National Champion  
 D: SGCH Barnowl Bewitched \*M

LA 2-4 FS89 EEEE (1st freshner), 3-3 FS91 VEVE  
 1<sup>st</sup> place 2 yr old at ADGA Nationals 2008  
 (see picture on front cover)  
 Best of Breed, W WA State Fair 2010

Hockus is an incredibly strong, tall, and dairy doe, she is also easily our highest producing doe in the herd. Hockus is probably our dairiest doe with wide, flat open ribbing that has made many a judge comment; all of this dairy character follows through to her smooth, capacious, and wide mammary system. With a handful of other hot challenge does on the show string this year, Hockus only made it out to the very competitive Western Washington State Fair, where she won Best of Breed! Her first daughters, Shazam and Alakazam (owned by Purple Thistle), freshened this year with well attached, high producing mammary systems and superb balance throughout.



Supreme Dairy Herd of Show, OR State 2010 1<sup>st</sup> place get of sire (K. Tach Lach), W WA State

10. CH Barnowl Acythera “Fish” American white/black DOB: 06/2006



**S: +\*B SG Kastdemur's Tach Lach**  
 D: Barnowl Aphrodite

LA 2-2 FS87 VVVV, 3-1 FS91 EEEE  
 Reserve Champion, Sonoma Co Fair 2009  
 Grand Champion, W WA State Fair 2009  
 1st place 4 yr old, Dist VII Specialty 2010  
 GCH, BU, BIS, Oregon State Fair 2010  
 Reserve Champion, W WA State Fair 2010

“Fish” was definitely the star and crowd favorite of our 2010 show string. She’s a big goat with a big black fish spot and a big personality...she is simply impossible to miss! And this year, she was quite possibly the hottest doe we’ve ever shown—catching every judge’s eye, winning 5 Best of Breeds, 4 Best in Shows, and helping to make the Barnowl group classes virtually undefeated. Fish is one of our largest and longest does, being just a smidge shorter at the withers but slightly wider than Elena. While not as dairy as our other Tach daughters, she does balance strength, grace, and sharpness quite nicely while walking on very strong feet and legs. Further she has a well-attached mammary system with a very nice fore udder. We are retaining her buck kid, Anteros sired by Gandalf as our clean-up buck for 2010.

11. CH Barnowl Quaffle American cream DOB: 04/2007



S: +B SG Kickapoo-Valley Travis  
**SS: +\*B Winterwood's Musician**  
 SD: SGCH Kickapoo-Valley Respect Sequel  
 2006 ADGA National Champion  
 D: SGCH Barnowl Quidditch

LA 1-5 FS87 V++E, 2-4 FS90 VEEE  
 2x BUOB as a 2 year old  
 2010: 3xGCH, 2xBOB, 1xRsCH  
 2010 Dist VII Specialty GCH, BOB, BU, & BIS

Quaffle's strong feet and legs, exceptional dairy character balanced with strength of bone, and outstanding mammary system has made her our hot 2 year old, 3 year old, and will likely continue to make her one of our strongest, most balanced does in the herd. Like many of the Travis daughters, Quaffle is a carbon copy of her mother with improved sharpness, feet and legs, and mammary system. Also like all of our Travis daughters, she is a "compact model" being more of a medium-framed doe compared to our typically large-framed does.

12. Barnowl Adrastea American white w/tan splotches DOB: 03/2007



S: +B SG Kickapoo-Valley Travis  
 D: Barnowl Amaltheia \*M

LA 1-6 FS84 +V+V  
 2x GCH 2010, 1xRsCH

"Drassie" was one of those gangly teenage milking yearlings so we decided to leave her dry for a year in hopes that a break would give her time to grow up and

put it altogether. And grow up she did! She is now the tallest and longest of our Travis daughters, and gives Quaffle a run for her money in being the deepest. She has smoothed out nicely and her strength of bone has developed quite well as has her capacious, well-attached mammary system. Showing only half the season, Adreasta won 2 GCH legs towards her championship and we are confident that she will continue to do better as she further matures next year.

13. Barnowl Qiviut Q Purebred black/cream sundgau DOB: 04/2007



S: +B SG Kickapoo-Valley Travis  
 D: SG Barnowl Curlie Q

LA FS87 VVVV

Qiviut (the Yupiq word for the underhair of the muskox) is a very promising young doe. Smoothly blended, sharp, and with the lovely upstanding and level style of her dam, Qiviut's general appearance makes her a real eye-catcher. Although not as capacious as our other Travis daughter, Qiviut has a beautiful mammary system with a smoothly-blended fore udder and a high, wide rear udder.

14. Barnowl Boucle Q Purebred choc/butterscotch sundgau DOB: 04/2008



S: Barnowl Amour Courtier  
 SS: +B SG Kickapoo-Valley Travis  
**SD: Barnowl Deesse de L'Amour**  
 D: SG Barnowl Curlie Q

Boucle, French for "curly," is every bit as beautiful as her lovely dam and namesake. Placing 1<sup>st</sup> or 2<sup>nd</sup> in almost every show this year, this stylish, correct, and dairy doe was quite the eye-catching 2 year-old, 1<sup>st</sup> freshner, making many NW exhibitors remark, "you're going to have fun with her next year."

15. Barnowl Shazam American black/cream sundgau DOB: 04/2008

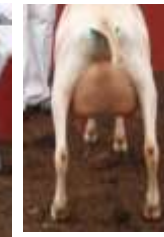


S: Barnowl Amour Courtier  
 D: CH Barnowl Hockus Pockus

FOR SALE

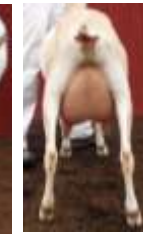
Shazamis a sharp, deep, and dairy doe with strong feet and legs. Despite aborting this year she has come into full milk with a marvelous, well-attached rear udder.

16. Barnowl Wicked American orange DOB: 03/2009



S: \*B Tempo Liggety  
**SS: GCH +\*B Becca's Tuscon**  
**SSS: GCH +\*B Becca's Hemingway**  
 SSD: SGCH OneOakHill Med. Tuzla  
 SD: SG Tempo Mia 4\*M  
**SDS: SGCH ++\*B Quixote Kate's Kareem**  
 SDD: SGCH Tempo Nadia 3\*M  
 D: SGCH Barnowl Bewitched \*M

17. Barnowl Charmed American cream DOB: 03/2009



These BWitch twins are very much gangly milking yearlings, but that just makes us all the more excited about them. They are each long, stretchy, dairy does with lots of room to grow. They are a bit give and take with Charmed having near-ideal general appearance and Wicked freshening with a very strong mammary system. All and all, we are excited to watch them mature.

**To be first freshners...**

18. Barnowl Avalon Amer. black/white DOB: 05/2009

S: \*B Tempo Liggety D: Barnowl Aphrodite

19. Barnowl Ramora Amer. Orange/cream DOB: 04/2009

S: \*B Tempo Liggety D: CH Barnowl Hedwig

20. Barnowl Midori Purebred white w/ waddles DOB: 04/2009

S: \*B Tempo Liggety D: SGCH Tempo Elena 7\*M

21. Barnowl Black Magic Woman Amer. Black sundgau DOB: 05/2009

S: \*B Tempo Liggety D: SGCH Barnowl Hockus Pockus